



Our work in Sörmland with issues of disability



Disability policy in Sweden

- Universal equality of human dignity and human rights.
- All citizens will have the same possibilities.
- Solutions designed to function for everybody.
- Individual support - opportunities of participation and equality, supplementing the universal solutions.
- Disability policy spans all policy fields.

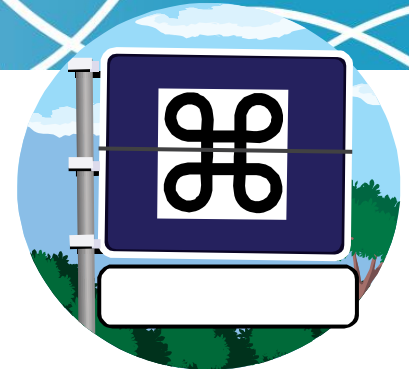


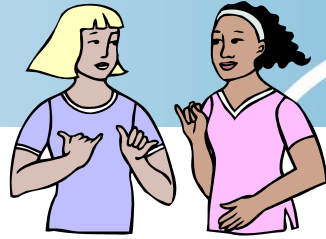
- National disability policy - “From patient to citizen”.
- 2011 Strategy on Disability - follows intentions of the United Nations Convention on the Rights of Persons with Disabilities
- Contains targets for ten different policy fields:
 - *Labour market*
 - *Health*
 - *IT*
 - *Consumer*
 - *Education*
 - *Increased physical accessibility*
 - *Culture, media, sport*
 - *Social*
 - *Public transport*
 - *Legal system*
- Responsibility devolves on the whole of Sweden’s public sector.



Historical retrospect

- Late 1900 century
 - First initiatives to introduce "lameinstitutes"
- 1950
 - Small centers for children with mobility impairment
- 1960
 - Regional habilitation centers were formed
 - Compulsory school för disabled children introduces
- 1970
 - Thoughts of integration in society take form
 - Development of assistive technical devices





Disability support in Sweden today

(a concern for both the county council and the municipality)

- More than 20% of the Swedish population (16-84) have a disability
- Children live mainly with their families
- Children participate in ordinary community school
- Accommodation with special services for adults
- Centers for daily activities for adults



Disability support in the county council of Sörmland

- Habilitation center
- Center for assistive technical devices
- School and accomodation for children with autism
- Contribution to organizations for persons with disability
- Dialogue with organizations for persons with disability





Habilitation center

- A center for children and adults with congenital or early acquired disability
- Main goal - to improve participation, independence and an active lifestyle.
- Multi professional team. Intervention can include:
 - Assistive technical devices
 - Training to get by in everyday life
 - Advice, support and information
 - Experiences with others in similar situations
- Interpretar center - enables communication between totally or partially deaf, hear and deaf-blind and hearing.





Center for Assistive technical devices



Provide technical devices in areas of:

- Cognition, communication, hearing, incontinence, medical treatment, motion, vision
- Prescribed by occupational therapists, nurses, speech therapists, physical therapists
- Political decisions guarantee equality among inhabitants within the county
- Financed by; county council and municipality





School for children with autism

- 38 students from all over Sweden
- Ages 12-21 – school adapted to each individual
- Special education principles – Division Teach North Carolina
- Financed by students home municipality





Dialogue and contribution to organizations for persons with disability

- Consultative body between organisations and politicians
 - forum for information
 - discussion and dialogue
- Contribution to organizations
 - due to amount of members
 - project based